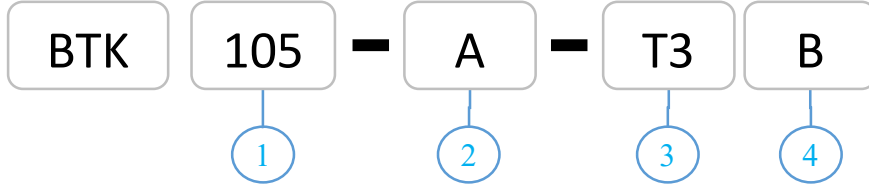


BTK - Large Flow vacuum generator

How to Order



1-Passage diameter

Symbol	∅ mm	Symbol	∅ mm
105	5.5	3831	31
136	6.5	5142	42
1611	11.5	6355	55
1913	13	7666	66
2518	18.5	10086	86
3224	24.5		



2-Body material

Symbol	Material
A	Aluminum alloy
S	Stainless steel



Tube



Dust bag

3-Tube

Symbol	Length(m)	Symbol	Length (m)
Nil	Nil	T3	3
T1	1	T4	4
T2	2	T5	5

4-Dust bag

Nil	Without dust bag
B	With dust bag

Specifications

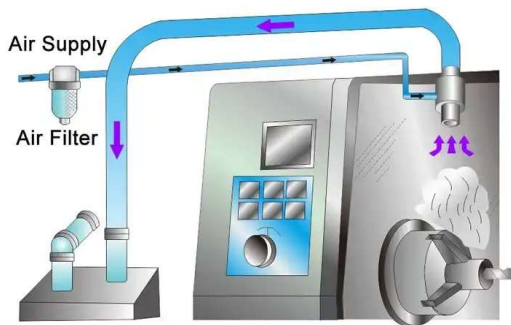
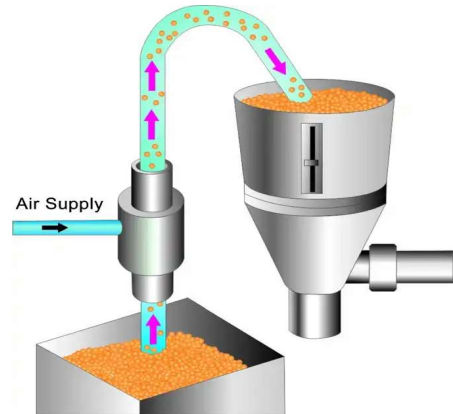
Fluid	Air
Supply pressure range [MPa]	0 to 0.7
Ambient and fluid temperatures [°C]	-5 to 80 (with no freezing or condensation)

- ❖ Low noise, maintenance-free
- ❖ Compact structure, no moving parts, small size
- ❖ Equipped with standard hose, easy to install
- ❖ Aluminum or stainless steel materials, with high flow capacity
- ❖ Provide a variety of specifications, pipe inner diameter has a variety of sizes to choose from

Application:

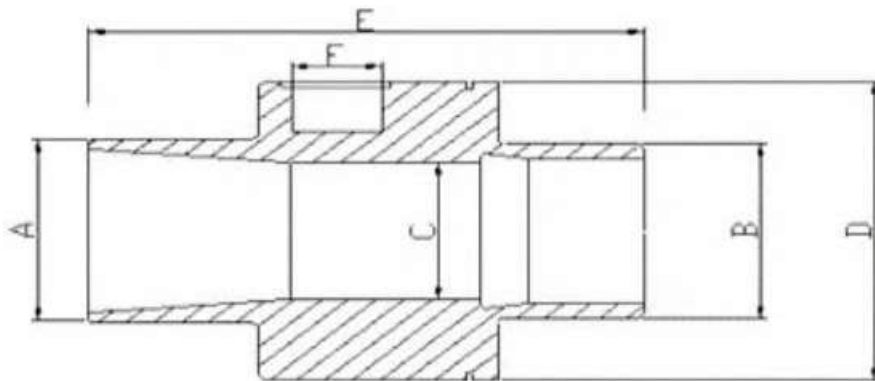
- ❖ Typical industrial application examples Plastic processing

Plastic granules feeding It is easy to suck the plastic particles to be processed into the machine's hopper. If you want to change the color of the raw material or change the raw material, it will be easy to do it using the unique vacuum loader.



- ❖ Metalworking

- The Grinding Air Amplifier's extraction system avoids the traditional, costly method of consuming a lot of air and extracting a lot of grinding dust.
- Extraction of exhaust air from CNC machine tools



Dimensions

Model	A (mm)	B (mm)	C (mm)	D (mm)	E (mm)	F (Thread Type)	Air consumption (6bar)
BTK105	10.2	10.2	5.5	28	60	PT-1/8	0.16 m ³ /min
BTK136	13	13	6.5	33.5	72	PT-1/8	0.20 m ³ /min
BTK1611	16	16	11.5	36	80	PT-1/8	0.25 m ³ /min
BTK1913	19	19	13	43	85	PT-1/4	0.33 m ³ /min
BTK2518	25.4	25.4	18.5	53	102	PT-1/4	0.45 m ³ /min
BTK3224	32	32	24.5	58.5	106	PT-3/8	0.77 m ³ /min
BTK3831	38	38	31	68	110	PT-3/8	0.99 m ³ /min
BTK5142	51	51	42	78	130	PT-3/8	1.30 m ³ /min
BTK6355	63	63	55	94	140	PT-1/2	1.60 m ³ /min
BTK7666	76	76	66	107	158	PT-1/2	2.00 m ³ /min
BTK10086	100	100	86	140	165	PT-1/2	2.80 m ³ /min